

Contact: Lorra Martens 539 Buckskin Road
Martens Farms Inman, KS 67546-8689
www.123farmworks.com 620.858.6761 (toll-free) 877.585.6761
info@123farmworks.com



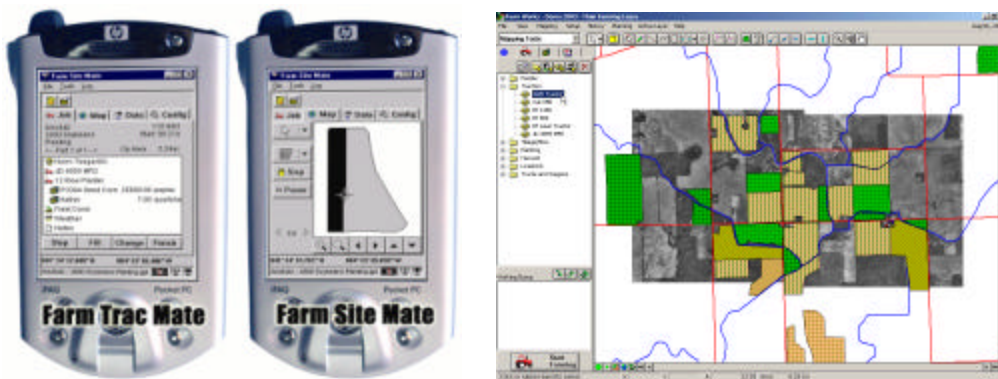
News Release

Farm Works Software Introduces Two New Agricultural Software Products That Take Field Record Keeping to the Next Level

New Farm Trac Plus, and Integrated Trac Mate and Site Mate

November 14, 2003 – Farm Trac Plus and the integration of Farm Trac Mate with GPS mapping gives the agricultural community the tools to further manage their farm businesses.

Farm Works is excited to announce the release of "Farm Trac Plus". This program incorporates all the features of their original Farm Trac program, which has proven itself on farms across the United States as well as the world, plus adds many new features. Some of these new attributes include geo-referenced road and waterway maps and direct download of free Internet satellite images. Product costing and planned field operations are just a couple of the new ideas developed in this software. According to R. Scott Nusbaum, Manager of Farm Works, "Everything in farming is constantly changing and improving. We listen to what our customers need and want, and try to include these new ideas in the software we develop." Farm Trac Plus retails for \$300.00 and existing Farm Trac users can upgrade to this new program for only \$90.00 from Martens Farms, a leading Farm Works dealer.



Farm Trac Mate and Farm Site Mate are now integrated. For over five years Farm Works has offered in-field record keeping for Windows CE/Pocket PC devices with Farm Trac Mate. Farm Works is now proud to lead the industry with record keeping that is fully integrated with GPS mapping. By joining Farm Trac Mate with Farm Site Mate, the leading GPS mapping program, growers and agribusinesses can now create production maps that are tied to field records. Tillage, planting, chemical, fertilizer, and harvest records can now be linked to maps that show exactly where the operations have been performed.

The new integrated Farm Trac Mate and Farm Site Mate programs use data from any GPS receiver to compute product usage and other valuable information. The new Farm Trac Mate works with Site Mate Basic or Scouting for creating maps that are tied to records, or with Site Mate Data Logging and VRA for collecting data from a controller or for doing variable rate application. At a cost of only \$250.00 it is a must for any progressive agribusiness. Current users can upgrade for \$90.00 from Martens Farms.

- [Farm Works Software Introduces Two New Agricultural Software Products](#)

Currently in the works for a future upgrade of Farm Trac Mate are work orders, created as crop plans with programs such as Farm Trac Plus and Farm Site Professional. Users select a work order to see a summary of the job to be completed. Once selected, the work order simplifies field record keeping so that the operator simply presses a “Go” button to begin documenting the operation. Upon completion, product use and personal time are automatically calculated and the files are ready for synchronizing with the desktop office software.

About Farm Works Software

Farm Works Software offers a suite of fully integrated farm management programs designed specifically to help producers operate their farm more profitably. In addition to farm management programs, Farm Works offers software for agricultural consultants and retailers. Farm Works Software has over 10 years of experience and is continually improving existing software and developing new programs to benefit the agricultural industry. Farm Works Software currently has over 20,000 users worldwide and has programs available in multiple languages.

About Martens Farms

Jim and Lorra Martens operate their farm and business near Inman, Kansas. They've been using Farm Works software since 1994 and training others to use it since 1996. The Martens were top dealers for Farm Works Software in 2003 and 2004. They run their business by the “golden rules”, including honesty, integrity, responsive service, and just treating others as they would like to be treated. Martens Farms provides sales, consulting and training on Farm Works Software, and Precision Farming equipment. The Martens work with farming operations of all sizes and types, with the ultimate goal of improving profits and productivity.